

EMERGENCE

ASLA Associate Advisory Committee's Newsletter

For Emerging Professionals - By Emerging Professionals



American Society of
Landscape Architects

NEW YEAR - NEW COMMITTEE



The Chair's Address

My name is Kene Okigbo. I am the new chair of the Associate Advisory Committee. To those that do not yet know, the AAC reports to the ASLA Board of Trustees on matters relating to Emerging Professionals and Associate Members. The reduction in Associate Member dues is one example of a response to our concerns.

In the coming year, the AAC will be looking to you; students, recent grads, & emerging professionals for your thoughts on what you need and expect from ASLA. Keep an eye out for information that you'll find useful about upcoming

events, LARE prep, and exciting initiatives that Emerging Professionals are leading across the nation.

If you have questions, concerns, and/or feedback you can reach out to me personally

email: kene.okigbo@gmail.com

twitter: [keneokigbo](https://twitter.com/keneokigbo)

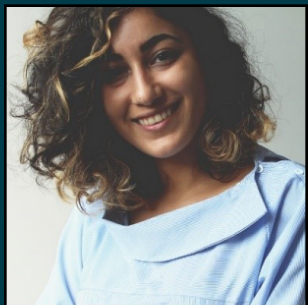
As you're working and using social media, take advantage of the hashtag #WEAREASLA. We want to hear from you. Additionally, you will be hearing from me, along with the rest of the Associate Advisory Committee.

Sincerely,

Kene Okigbo, ASLA

Membership Matters

Introducing the 2019 AAC



Through the years, I am constantly reminded through my membership that landscape architects are all moving towards the same goal - making the world a better place. ASLA is able to bring everyone together to support each other in pursuing our dreams.

- Elyana Javaheri, Associate ASLA

ASLA supports and develops excellence in Landscape Architecture. We are a small community of professionals with a big impact on the world. In ASLA, we can share knowledge, foster community, and grow as individuals.

- Kira Sargent, Associate ASLA



ASLA is important to me because it provides a community of like minded people who share similar interests, values and visions for our future. Opportunities for involvement are open to all who are interested in becoming a part of that community. ASLA is also an invaluable resource for providing technical information on many top issues in the field.

- Patty Lynn Hines, Associate ASLA

ASLA is important to me for many reasons. It connects me to a rich community of diverse people in my field from whom I can learn, and with whom I can work. Further, it provides a platform to take collective meaningful actions to increase opportunities for landscape architects to make a difference in the world. Being an active member of ASLA is part of my professional identity.

- Sara Hadavi, Associate ASLA



ASLA is important to me, as a young professional, because it offers opportunities to meet and interact with some of the most passionate, and intellectual, Landscape Architects in the country. It's also important to be involved in an organization that passionately fights for my license and to show the value of Landscape Architects with the profession, as well as to the general public. We have an incredible opportunity to be a part of ASLA to continue to grow and strengthen the role of Landscape Architects moving forward." – Tyler Richburg, Associate ASLA

Who We're Following

@usinterior

@JonathonGeels

@DFernandezASLA

What We're Listening To

Radiolab: Cities

PLACEMAKERS: The Quest to
Make the Perfect Place

Roots of Design: Daniel Tal

Looking Ahead

LARE Prep Week
Feb. 4th - 8th

World Landscape
Architecture Month - April

Advocacy Day - May 2, 2019